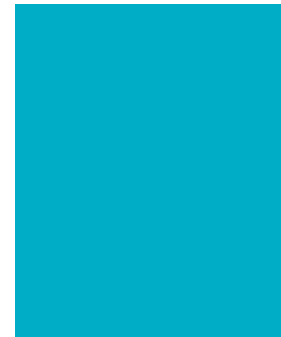


London Cancer Screening coverage & uptake



July 2014



Cervical & Breast Screening Coverage and Bowel Screening Uptake by CCG

CCG Name	% Cervical Coverage in last 3.5/5.5 yrs (25-64 yrs old)		% Breast Coverage in last 3 year period (50-70 yrs old)		% Uptake Bowel for February 2014 (60-69 yrs)		
	Nov-13	Rolling 3 months	Nov-13	Rolling 3 months	Invited	Adequately screened	Uptake
NCEL							
BARKING AND DAGENHAM	70.4%	70.3%	61.7%	61.8%	724	323	44.6%
BARNET	66.7%	66.5%	66.8%	66.6%	1,814	1,003	55.3%
CAMDEN	59.8%	59.9%	57.5%	57.6%	1,144	525	45.9%
CITY AND HACKNEY TEACHING	69.5%	69.5%	56.6%	57.1%	998	392	39.3%
ENFIELD	73.5%	73.3%	69.8%	69.7%	1,521	881	57.9%
HARINGEY TEACHING	71.4%	71.3%	63.9%	63.5%	1,349	636	47.1%
HAVERING	75.7%	75.6%	69.4%	68.2%	1,315	678	51.6%
ISLINGTON	68.2%	68.2%	56.1%	57.6%	951	452	47.5%
NEWHAM	68.3%	68.4%	58.2%	59.4%	1,067	406	38.1%
REDBRIDGE	70.5%	70.5%	67.1%	66.4%	1,346	694	51.6%
TOWER HAMLETS	68.3%	68.4%	60.0%	60.8%	659	249	37.8%
WALTHAM FOREST	71.3%	71.4%	56.2%	65.1%	1,097	598	54.5%
NWL							
BRENT	67.4%	67.6%	65.2%	65.1%	1,386	626	45.2%
CENTRAL LONDON (WESTMINSTER)	59.8%	60.2%	55.6%	55.9%	807	341	42.3%
EALING	64.4%	64.6%	63.8%	63.7%	1,568	743	47.4%
HAMMERSMITH AND FULHAM	61.5%	61.9%	58.2%	58.4%	876	363	41.4%
HARROW	64.7%	64.9%	72.0%	71.9%	1,165	609	52.3%
HILLINGDON	66.7%	66.8%	66.1%	65.9%	1,369	712	52.0%
HOUNSLOW	65.8%	65.9%	64.1%	64.0%	1,180	588	49.8%
WEST LONDON	60.3%	60.6%	55.6%	55.6%	1,128	473	41.9%
SL							
BEXLEY	77.0%	77.0%	73.1%	73.4%	1,371	753	54.9%
BROMLEY	76.6%	76.5%	71.9%	71.7%	1,594	785	49.2%
CROYDON	72.4%	72.2%	60.5%	60.4%	1,956	948	48.5%
GREENWICH TEACHING	71.3%	71.4%	63.4%	62.5%	1,130	490	43.4%
KINGSTON	69.9%	69.7%	54.4%	53.8%	926	495	53.5%
LAMBETH	71.0%	70.9%	58.3%	58.0%	1,337	517	38.7%
LEWISHAM	72.7%	72.4%	61.5%	61.0%	1,193	508	42.6%
MERTON CCG	70.3%	70.1%	62.9%	62.1%	1,004	507	50.5%
RICHMOND AND TWICKENHAM	72.7%	72.2%	65.0%	64.7%	1,133	590	52.1%
SOUTHWARK	72.3%	72.0%	60.5%	60.4%	1,054	369	35.0%
SUTTON CCG	74.5%	74.3%	68.2%	68.2%	1,058	577	54.5%
WANDSWORTH	67.9%	67.7%	58.9%	59.1%	1,307	616	47.1%

Breast: Coverage in Kingston has risen and in Waltham Forest there has been a significant drop this month.

Kingston: In November 13 there has been a rise to 54.4% since last month. However coverage has fallen from 70% in September 2012.

Waltham Forest: For November 13 Waltham stands out with a drop of 8.9% since last month (65.1%).

Central & East London Breast Screening Service, has since September 2014 been operating a managed slow-down on the advice of NHSE and London Quality Assurance. They are currently operating at around 50% capacity with an extended round length (max 40 months rather than 36) which has had an impact on coverage.

Bowel: Uptake has increased in London since last month, and is now at 47.9%, with a 8.5% increase since Nov 13.

3 CCGs have seen particular changes this month. Bromley, 49.2%, drop of 12.2%, Havering, 51.6%, drop of 5.2% and Southwark, 35%, drop of 4.1%.

Cervical: Screening coverage levels have remained static, and broadly unchanged from last month

Cervical Screening



NHS Cervical Cancer Screening Programme

Cervical screening coverage data by month – 25-64yrs NCEL, CCG Trend charts : Last 12 months

NCEL	Dec-12	Jan-13	Feb-13	Mar-13	Apr-13	May-13	Jun-13	Jul-13	Aug-13	Sep-13	Oct-13	Nov-13	% Coverage by Month
NHS Barking And Dagenham CCG	68.9%	69.1%	69.3%	69.3%	69.4%	69.7%	67.8%	67.9%	67.9%	67.9%	70.4%	70.4%	
NHS Barnet CCG	64.7%	64.7%	64.7%	64.8%	65.2%	65.5%	62.6%	63.0%	63.2%	63.2%	66.5%	66.7%	
NHS Camden CCG	59.1%	59.1%	59.2%	59.1%	59.2%	59.2%	56.0%	56.3%	56.6%	56.6%	59.9%	59.8%	
NHS City And Hackney CCG	66.9%	67.0%	67.1%	68.2%	68.5%	69.0%	67.4%	67.4%	67.4%	67.4%	69.6%	69.5%	
NHS Enfield CCG	72.1%	72.1%	72.4%	72.5%	72.6%	72.7%	69.9%	69.9%	69.8%	69.8%	73.4%	73.5%	
NHS Haringey CCG	69.1%	69.1%	69.2%	69.3%	69.1%	69.2%	66.6%	66.7%	67.3%	67.3%	71.3%	71.4%	
NHS Havering CCG	74.6%	74.5%	74.7%	74.8%	74.8%	75.0%	72.8%	73.0%	73.0%	73.0%	75.6%	75.7%	
NHS Islington CCG	67.0%	66.9%	66.8%	66.9%	66.8%	66.8%	66.0%	66.1%	66.2%	66.2%	68.2%	68.2%	
NHS Newham CCG	66.4%	66.4%	66.7%	67.4%	67.5%	68.0%	65.1%	65.2%	65.1%	65.1%	68.5%	68.3%	
NHS Redbridge CCG	69.8%	69.8%	69.8%	69.8%	69.7%	70.0%	65.9%	65.8%	66.2%	66.2%	70.6%	70.5%	
NHS Tower Hamlets CCG	66.1%	66.2%	66.4%	67.4%	67.6%	67.9%	66.1%	66.1%	66.4%	66.4%	68.4%	68.3%	
NHS Waltham Forest CCG	70.3%	70.1%	70.4%	70.6%	70.9%	71.4%	68.6%	68.6%	68.5%	68.5%	71.5%	71.3%	
NCEL Total	67.7%	67.7%	67.8%	68.1%	68.3%	68.5%	68.8%	68.9%	69.0%	69.3%	69.4%	69.3%	

NCEL performance has increased from 68.9% to 69.3% between July 13 to November 13.
Cervical screening coverage remains consistent with little variance each month.

Cervical screening coverage data by month – 25-64yrs NWL, CCG Trend charts : Last 12 months

NWL	Dec-12	Jan-13	Feb-13	Mar-13	Apr-13	May-13	Jun-13	Jul-13	Aug-13	Sep-13	Oct-13	Nov-13	% Coverage by Month
NHS Brent CCG	67.9%	67.8%	67.7%	67.7%	67.7%	67.7%	64.1%	64.2%	64.1%	64.1%	67.6%	67.4%	
NHS Central London (Westminster) CCG	59.4%	59.2%	59.4%	59.6%	62.3%	62.2%	60.0%	59.7%	59.1%	59.1%	60.1%	59.8%	
NHS Ealing CCG	64.6%	64.5%	64.7%	64.8%	64.9%	64.9%	61.1%	61.1%	60.9%	60.9%	64.6%	64.4%	
NHS Hammersmith And Fulham CCG	58.4%	58.2%	58.2%	58.4%	63.8%	63.5%	61.1%	60.8%	60.3%	60.3%	61.8%	61.5%	
NHS Harrow CCG	65.1%	65.1%	65.2%	65.1%	65.2%	65.3%	60.8%	60.8%	60.5%	60.5%	64.9%	64.7%	
NHS Hillingdon CCG	67.1%	66.9%	66.9%	67.0%	67.1%	67.0%	63.3%	63.4%	63.4%	63.4%	66.8%	66.7%	
NHS Hounslow CCG	65.6%	65.6%	65.9%	65.9%	66.2%	66.3%	63.1%	63.1%	62.8%	62.8%	65.9%	65.8%	
NHS West London CCG	59.7%	59.6%	59.7%	59.8%	62.5%	62.2%	59.7%	59.5%	59.0%	59.0%	60.6%	60.3%	
NWL total	63.9%	63.8%	64.0%	64.0%	65.2%	65.2%	65.2%	65.1%	64.9%	64.7%	64.4%	64.2%	

NWL performance has decreased from 65.1% to 64.2% between July 13 to November 13.

West London and Central London have the lowest screening coverage and have remained constantly lower compared to the other 6 CCGs in NWL, since June 13.

Cervical screening coverage data by month – 25-64yrs SL CCG Trend charts : Last 12 months

SL	Dec-12	Jan-13	Feb-13	Mar-13	Apr-13	May-13	Jun-13	Jul-13	Aug-13	Sep-13	Oct-13	Nov-13	% Coverage by Month
NHS Bexley CCG	76.9%	76.9%	77.0%	77.1%	77.1%	77.0%	75.7%	75.6%	75.5%	75.5%	77.1%	77.0%	
NHS Bromley CCG	76.0%	75.9%	76.0%	75.9%	76.0%	76.1%	74.2%	74.4%	74.3%	74.3%	76.6%	76.6%	
NHS Croydon CCG	71.5%	71.6%	71.7%	71.7%	71.7%	71.9%	69.0%	69.3%	69.2%	69.2%	72.1%	72.4%	
NHS Greenwich CCG	70.3%	70.2%	70.5%	71.3%	71.3%	71.4%	69.8%	70.0%	69.9%	69.9%	71.4%	71.3%	
NHS Kingston CCG	69.7%	69.6%	69.7%	69.4%	69.4%	69.7%	67.1%	67.3%	67.3%	67.3%	69.6%	69.9%	
NHS Lambeth CCG	67.6%	67.7%	67.7%	70.1%	70.1%	70.1%	68.5%	68.6%	68.8%	68.8%	71.0%	71.0%	
NHS Lewisham CCG	70.3%	70.3%	70.4%	72.0%	72.0%	71.9%	69.9%	69.9%	69.7%	69.7%	72.7%	72.7%	
NHS Merton CCG	68.9%	68.9%	68.9%	69.3%	69.4%	69.4%	67.2%	67.7%	67.7%	67.7%	70.1%	70.3%	
NHS Richmond CCG	71.9%	71.9%	71.9%	71.8%	71.8%	72.0%	70.1%	70.1%	70.0%	70.0%	72.1%	72.7%	
NHS Southwark CCG	68.7%	69.3%	69.2%	71.2%	71.2%	71.0%	69.3%	69.4%	69.2%	69.2%	72.6%	72.3%	
NHS Sutton CCG	72.7%	72.8%	73.1%	73.2%	73.3%	73.5%	72.2%	72.4%	72.5%	72.5%	74.2%	74.5%	
NHS Wandsworth CCG	67.8%	67.8%	67.8%	67.7%	67.7%	67.6%	66.2%	66.3%	66.1%	66.1%	67.6%	67.9%	
SL total	70.6%	70.7%	70.8%	71.5%	71.5%	71.5%	71.6%	71.7%	71.7%	71.7%	72.0%	72.1%	
London Total	67.9%	67.9%	68.0%	68.4%	68.7%	68.8%	69.2%	69.0%	69.0%	69.1%	69.1%	69.1%	

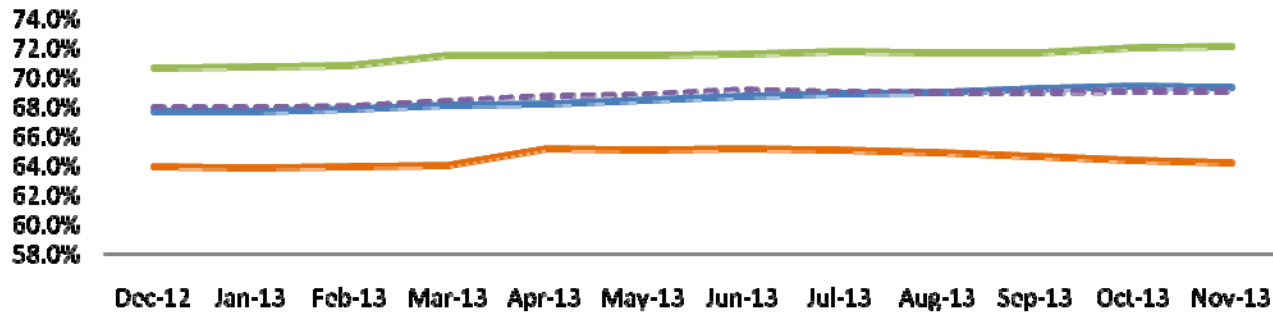
SL performance has seen change month on month.

There has been very little variance between all the CCGs. Wandsworth CCG has the lowest uptake of 67.9% in South London.

Cervical screening coverage data by month – 25-64yrs

Patch Team Trend charts : Last 12 months

Cervical Screening Coverage 25-64 yrs by Month (last 12 mths) for NCEL, NW, SL & London
 Source: CSPNS, Open Exeter



	Dec-12	Jan-13	Feb-13	Mar-13	Apr-13	May-13	Jun-13	Jul-13	Aug-13	Sep-13	Oct-13	Nov-13
NCEL Total	67.7%	67.7%	67.8%	68.1%	68.3%	68.5%	68.8%	68.9%	69.0%	69.3%	69.4%	69.3%
NWL total	63.9%	63.8%	64.0%	64.0%	65.2%	65.2%	65.2%	65.1%	64.9%	64.7%	64.4%	64.2%
SL total	70.6%	70.7%	70.8%	71.5%	71.5%	71.5%	71.6%	71.7%	71.7%	71.7%	72.0%	72.1%
London Total	67.9%	67.9%	68.0%	68.4%	68.7%	68.8%	69.2%	69.0%	69.0%	69.1%	69.1%	69.1%

— NCEL Total — NWL total — SL total - - - London Total

Breast Screening



NHS Breast Cancer Screening Programme

Breast screening coverage data by month – 50-70yrs

NCEL CCG Trend charts : Last 12 months

NCEL	Dec-12	Jan-13	Feb-13	Mar-13	Apr-13	May-13	Jun-13	Jul-13	Aug-13	Sep-13	Oct-13	Nov-13	% Coverage by Month
NHS Barking And Dagenham CCG	65.8%	65.7%	65.3%	64.9%	64.3%	63.5%	63.2%	62.7%	62.3%	62.0%	61.7%	61.7%	
NHS Barnet CCG	64.8%	64.7%	64.9%	64.9%	64.8%	65.0%	65.5%	65.9%	66.0%	66.4%	66.6%	66.8%	
NHS Camden CCG	57.3%	57.5%	57.6%	57.6%	57.0%	57.4%	57.2%	57.4%	57.8%	57.6%	57.5%	57.5%	
NHS City And Hackney CCG	58.2%	58.6%	58.7%	58.7%	59.0%	58.8%	58.5%	58.2%	57.9%	57.6%	57.1%	56.6%	
NHS Enfield CCG	68.6%	69.0%	69.3%	69.6%	69.5%	69.6%	69.4%	69.4%	69.5%	69.5%	69.8%	69.8%	
NHS Haringey CCG	61.7%	61.7%	61.4%	61.3%	61.7%	61.3%	61.8%	62.3%	62.8%	63.0%	63.6%	63.9%	
NHS Havering CCG	72.3%	71.9%	71.1%	70.7%	70.0%	69.0%	68.8%	68.7%	68.4%	67.4%	67.8%	69.4%	
NHS Islington CCG	60.7%	60.4%	60.0%	59.6%	59.2%	58.4%	59.1%	59.2%	59.2%	58.8%	58.0%	56.1%	
NHS Newham CCG	62.2%	62.1%	62.0%	61.5%	61.4%	61.6%	61.4%	61.6%	61.5%	60.7%	59.4%	58.2%	
NHS Redbridge CCG	69.6%	69.4%	68.9%	68.7%	68.1%	67.4%	67.0%	66.7%	66.5%	66.3%	66.4%	67.1%	
NHS Tower Hamlets CCG	61.7%	61.9%	61.6%	61.5%	61.5%	60.8%	61.3%	61.6%	62.0%	61.8%	60.7%	60.0%	
NHS Waltham Forest CCG	66.5%	66.6%	66.5%	66.4%	66.1%	66.2%	65.7%	65.6%	65.2%	65.2%	65.1%	56.2%	
NCEL total	64.8%	64.8%	64.6%	64.5%	64.3%	64.0%	64.0%	64.0%	64.0%	63.8%	63.7%	63.2%	

Breast screening coverage remains static in London, with a gradual decline since January 2013.
NCEL performance has continued to see a gradual decline since July 13.

Breast screening coverage data by month – 50-70yrs NWL CCG Trend charts : Last 12 months

NWL	Dec-12	Jan-13	Feb-13	Mar-13	Apr-13	May-13	Jun-13	Jul-13	Aug-13	Sep-13	Oct-13	Nov-13
NHS Brent CCG	64.4%	64.9%	64.7%	64.3%	64.4%	64.8%	64.7%	64.4%	64.6%	64.9%	65.1%	65.2%
NHS Central London (Westminster) CCG	54.1%	54.2%	53.7%	53.6%	54.0%	56.4%	56.3%	56.2%	56.1%	56.1%	56.1%	55.6%
NHS Ealing CCG	63.4%	63.4%	63.2%	63.2%	63.1%	63.4%	63.4%	63.5%	63.6%	63.6%	63.7%	63.8%
NHS Hammersmith And Fulham CCG	55.6%	55.6%	55.8%	55.5%	55.8%	58.9%	58.9%	59.3%	58.9%	58.6%	58.5%	58.2%
NHS Harrow CCG	71.6%	71.5%	71.1%	71.4%	71.4%	71.7%	72.0%	72.0%	71.8%	71.6%	72.0%	72.0%
NHS Hillingdon CCG	66.3%	66.0%	65.7%	65.8%	65.5%	65.5%	65.2%	65.3%	65.3%	65.5%	65.9%	66.1%
NHS Hounslow CCG	64.3%	64.2%	63.9%	63.5%	63.4%	63.1%	62.9%	63.1%	63.2%	63.7%	64.1%	64.1%
NHS West London CCG	54.1%	53.9%	53.7%	54.2%	53.8%	55.4%	55.2%	55.4%	55.5%	55.6%	55.6%	55.6%
NWL total	62.9%	62.9%	62.6%	62.6%	62.6%	63.3%	63.2%	63.2%	63.2%	63.3%	63.5%	63.5%

NWL performance remains static at 63.5% and there is a gradual rise in, since August 13.

Breast screening coverage data by month – 50-70yrs SL CCG Trend charts : Last 12 months

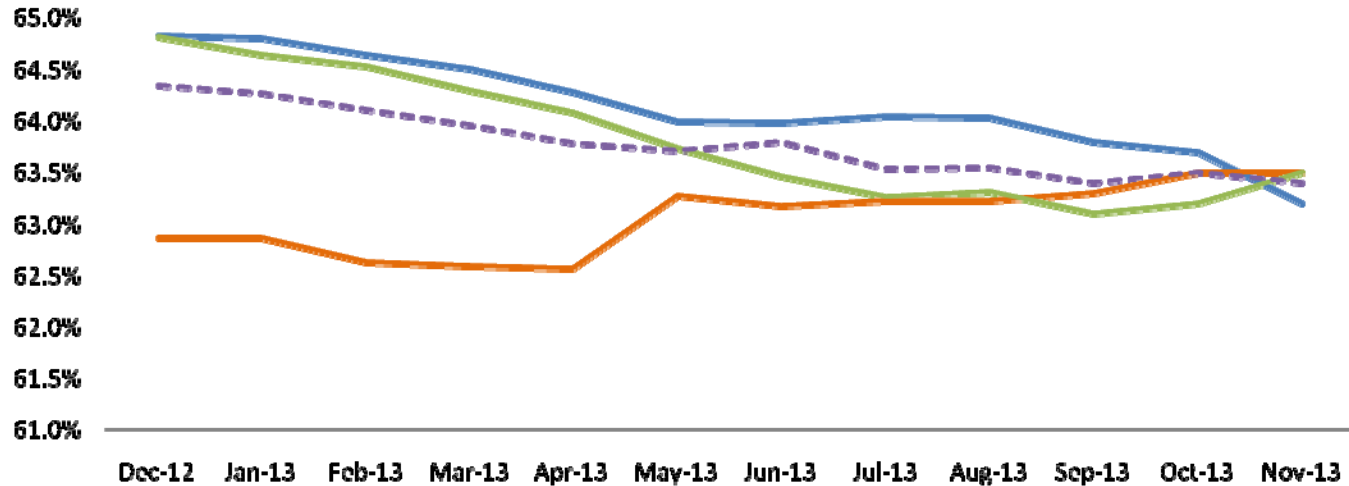
SL	Dec-12	Jan-13	Feb-13	Mar-13	Apr-13	May-13	Jun-13	Jul-13	Aug-13	Sep-13	Oct-13	Nov-13
NHS Bexley CCG	73.5%	73.4%	73.0%	73.3%	73.4%	73.8%	73.9%	73.5%	73.9%	73.8%	73.3%	73.1%
NHS Bromley CCG	71.8%	71.6%	71.6%	71.4%	71.2%	71.3%	71.6%	71.8%	71.7%	71.5%	71.7%	71.9%
NHS Croydon CCG	65.0%	64.9%	64.4%	63.9%	63.4%	61.9%	60.8%	59.9%	60.1%	60.3%	60.4%	60.5%
NHS Greenwich CCG	62.2%	62.4%	62.6%	62.3%	61.8%	61.0%	60.5%	60.8%	61.0%	61.6%	62.6%	63.4%
NHS Kingston CCG	66.1%	65.6%	64.6%	63.7%	62.8%	60.6%	58.5%	56.9%	55.2%	53.6%	53.4%	54.4%
NHS Lambeth CCG	58.2%	58.3%	58.5%	57.8%	58.0%	57.8%	57.9%	57.8%	57.9%	57.8%	58.0%	58.3%
NHS Lewisham CCG	60.4%	60.2%	60.4%	60.7%	60.8%	60.7%	60.4%	60.9%	61.2%	60.5%	61.0%	61.5%
NHS Merton CCG	64.6%	65.1%	64.6%	64.7%	64.8%	64.0%	63.6%	62.7%	62.4%	60.9%	62.7%	62.9%
NHS Richmond CCG	65.4%	64.8%	64.6%	64.3%	64.7%	64.8%	64.4%	64.3%	65.0%	65.0%	63.9%	65.0%
NHS Southwark CCG	61.0%	60.7%	60.5%	60.6%	60.5%	60.6%	60.2%	60.4%	60.6%	60.3%	60.5%	60.5%
NHS Sutton CCG	70.5%	70.6%	70.5%	70.0%	69.6%	69.2%	69.3%	68.5%	68.2%	68.1%	68.4%	68.2%
NHS Wandsworth CCG	57.3%	56.4%	57.0%	57.0%	56.3%	57.0%	57.9%	58.7%	59.0%	60.0%	58.5%	58.9%
SL total	64.8%	64.6%	64.5%	64.3%	64.1%	63.7%	63.5%	63.3%	63.3%	63.1%	63.2%	63.5%
London Total	64.3%	64.3%	64.1%	64.0%	63.8%	63.7%	63.8%	63.5%	63.5%	63.4%	63.5%	63.4%

SL performance remains static at 63.3%, with a gradual decline from February 2013.

Breast screening coverage data by month – 50-70yrs

Patch Team Trend charts : Last 12 months

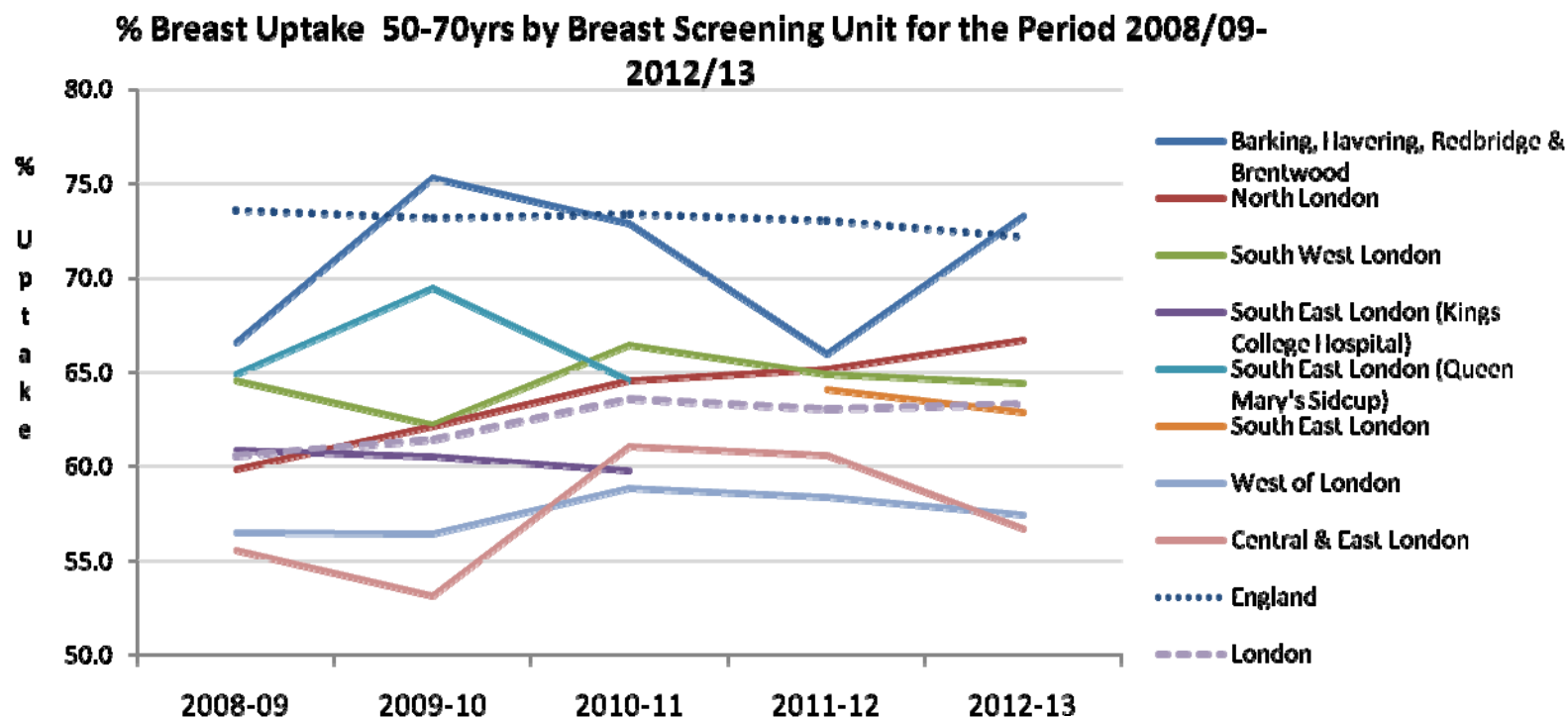
Breast Screening Coverage 50-70yrs by Month (last 12 mths) for NCEL, NW, SL & London
 Source: CSPNS, Open Exeter



	Dec-12	Jan-13	Feb-13	Mar-13	Apr-13	May-13	Jun-13	Jul-13	Aug-13	Sep-13	Oct-13	Nov-13
NCEL total	64.8%	64.8%	64.6%	64.5%	64.3%	64.0%	64.0%	64.0%	64.0%	63.8%	63.7%	63.2%
NWL total	62.9%	62.9%	62.6%	62.6%	62.6%	63.3%	63.2%	63.2%	63.2%	63.3%	63.5%	63.5%
SL total	64.8%	64.6%	64.5%	64.3%	64.1%	63.7%	63.5%	63.3%	63.3%	63.1%	63.2%	63.5%
London Total	64.3%	64.3%	64.1%	64.0%	63.8%	63.7%	63.8%	63.5%	63.5%	63.4%	63.5%	63.4%

— NCEL total
 — NWL total
 — SL total
 - - - London Total

% Breast screening Uptake of invitations to screen – 50-70yrs by Breast Screening Unit, 2008/09 – 2012/13



London's Breast screening uptake has increased from 63.1% to 63.2%.

Central & East London breast screening unit have reported a decrease in % uptake, with the lowest uptake in London from 60.6% to 56.7%.

West of London breast screening unit have also reported a decrease in % screening uptake from 58.4% to 57.4%.

Barking, Havering, Redbridge & Brentwood had an increase from 66% to 73.3% from 2011/12 to 2012/13.

Bowel Screening

NHS Bowel Screening Programme

NCEL area team : Bowel screening uptake data by month 60-69yrs from Mar 2013 to Feb 2014

NCEL	Mar-13	Apr-13	May-13	Jun-13	Jul-13	Aug-13	Sep-13	Oct-13	Nov-13	Dec-13	Jan-14	Feb-14	% Uptake by Month
NHS Barking And Dagenham CCG	43.7%	39.7%	40.9%	42.2%	40.8%	36.4%	34.9%	33.6%	35.2%	37.4%	40.8%	44.6%	
NHS Barnet CCG	42.3%	44.8%	46.3%	46.9%	51.3%	47.4%	42.2%	43.0%	34.0%	41.4%	47.0%	55.3%	
NHS Camden CCG	38.3%	39.9%	40.7%	49.4%	46.7%	38.4%	38.2%	37.7%	35.7%	37.0%	35.0%	45.9%	
NHS City And Hackney CCG	38.3%	40.9%	39.8%	43.7%	35.5%	33.8%	30.1%	30.9%	31.7%	34.4%	37.5%	39.3%	
NHS Enfield CCG	46.6%	45.7%	50.8%	53.7%	51.0%	46.1%	45.1%	41.9%	40.6%	47.5%	48.8%	57.9%	
NHS Haringey CCG	44.1%	40.8%	41.0%	48.2%	46.7%	40.9%	36.9%	41.9%	35.2%	41.7%	41.2%	47.1%	
NHS Havering CCG	53.0%	56.8%	55.5%	56.0%	51.6%	54.9%	51.3%	52.0%	53.4%	51.5%	56.6%	51.6%	
NHS Islington CCG	41.9%	40.7%	44.1%	45.6%	47.6%	44.4%	40.6%	40.6%	35.9%	37.2%	38.1%	47.5%	
NHS Newham CCG	35.3%	40.5%	39.7%	35.5%	33.5%	35.6%	30.2%	29.5%	35.0%	34.9%	35.4%	38.1%	
NHS Redbridge CCG	47.8%	49.1%	47.6%	52.3%	44.6%	42.6%	40.5%	36.4%	39.8%	45.6%	45.3%	51.6%	
NHS Tower Hamlets CCG	35.6%	41.4%	33.8%	30.8%	27.5%	28.4%	33.3%	32.4%	33.7%	33.2%	36.1%	37.8%	
NHS Waltham Forest CCG	49.2%	52.0%	44.3%	48.2%	42.7%	41.8%	40.1%	38.4%	40.2%	46.5%	44.3%	54.5%	
NCEL total	43.7%	45.4%	44.8%	47.1%	44.9%	42.5%	39.7%	39.2%	38.3%	41.9%	43.3%	48.9%	
London Total	47.2%	46.7%	46.5%	48.0%	43.7%	42.4%	40.8%	40.1%	38.5%	42.9%	47.8%	47.9%	

Please note : Data is subject to change, as each month the data is refreshed, therefore the figures may increase.

NCEL performance uptake has increased by 5.6% (48.9%) in February 14. There has been a gradual increase since December 2013.

London overall, has increased since December 2013.

Havering CCG uptake had seen a drop in February 14. Newham CCG continues to have a low % uptake, 21.9% below the minimum standard of 60% in February 14.

NWL area team : Bowel screening uptake data by month 60-69yrs from Mar 2013 to Feb 2014

NWL	Mar-13	Apr-13	May-13	Jun-13	Jul-13	Aug-13	Sep-13	Oct-13	Nov-13	Dec-13	Jan-14	Feb-14	% Uptake by Month
NHS Brent CCG	43.6%	50.0%	44.3%	41.7%	38.3%	34.5%	34.9%	41.4%	38.9%	43.7%	44.7%	45.2%	
NHS Central London (Westminster) CCG	42.0%	37.1%	41.8%	36.3%	35.6%	35.6%	33.0%	31.6%	28.2%	34.1%	39.0%	42.3%	
NHS Ealing CCG	42.8%	48.4%	47.7%	42.8%	40.2%	36.3%	36.2%	37.2%	37.4%	41.0%	48.6%	47.4%	
NHS Hammersmith And Fulham CCG	40.8%	41.0%	44.2%	39.5%	39.6%	39.8%	33.7%	32.5%	32.3%	37.0%	45.6%	41.4%	
NHS Harrow CCG	56.3%	59.2%	51.2%	50.5%	46.1%	43.2%	40.5%	48.5%	47.0%	51.0%	54.7%	52.3%	
NHS Hillingdon CCG	43.9%	58.1%	49.1%	48.2%	47.2%	45.8%	43.8%	48.6%	38.9%	44.2%	48.1%	52.0%	
NHS Hounslow CCG	44.4%	47.9%	48.8%	44.0%	39.4%	41.1%	37.4%	38.8%	33.4%	41.8%	51.7%	49.8%	
NHS West London (K&C & Qpp) CCG	38.4%	36.1%	42.2%	37.0%	34.6%	31.0%	30.8%	32.8%	26.6%	36.2%	43.7%	41.9%	
NW total	44.1%	48.4%	46.6%	42.9%	40.3%	38.3%	36.5%	40.0%	35.8%	41.9%	47.7%	47.0%	
London Total	47.2%	46.7%	46.5%	48.0%	43.7%	42.4%	40.8%	40.1%	38.5%	42.9%	47.8%	47.9%	

Please note : Data is subject to change, as each month the data is refreshed, therefore the figures may increase.

NWL performance uptake had seen an increase since December 2013, however in February 14 there was a fall in uptake by 0.7%. Hammersmith & Fulham CCG has seen the most drop this month from 45.6% to 41.4% (4.2%).

SL area team : Bowel screening uptake data by month 60-69yrs from Mar 2013 to Feb 2014

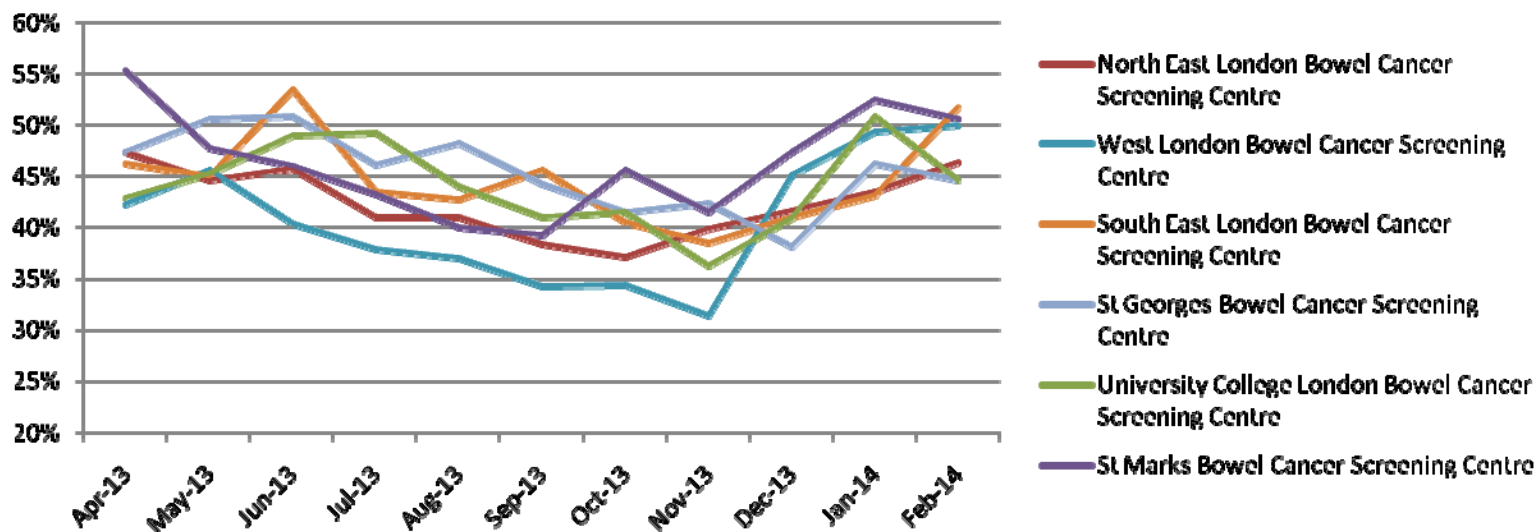
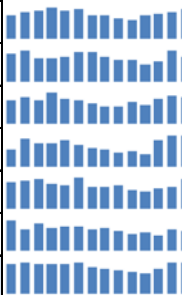
SL	Mar-13	Apr-13	May-13	Jun-13	Jul-13	Aug-13	Sep-13	Oct-13	Nov-13	Dec-13	Jan-14	Feb-14	% Uptake by Month
NHS Bexley CCG	61.8%	54.9%	55.2%	66.9%	50.9%	46.7%	53.4%	47.4%	43.4%	48.4%	58.9%	54.9%	
NHS Bromley CCG	61.3%	53.3%	53.2%	61.6%	55.6%	56.7%	55.6%	52.4%	52.5%	47.2%	61.2%	49.2%	
NHS Croydon CCG	52.9%	47.4%	49.6%	49.8%	42.4%	47.9%	44.5%	38.7%	42.7%	48.1%	50.6%	48.5%	
NHS Greenwich CCG	48.3%	41.9%	41.6%	54.0%	42.1%	40.7%	43.5%	37.7%	36.7%	38.7%	49.9%	43.4%	
NHS Kingston CCG	60.6%	50.9%	54.4%	55.0%	50.2%	49.5%	44.5%	42.4%	46.2%	51.5%	56.9%	53.5%	
NHS Lambeth CCG	44.0%	39.6%	39.0%	43.6%	34.1%	37.4%	35.3%	32.9%	30.0%	34.8%	39.5%	38.7%	
NHS Lewisham CCG	44.7%	45.3%	36.8%	49.2%	36.9%	35.7%	42.9%	34.2%	32.0%	38.7%	44.8%	42.6%	
NHS Merton CCG	50.1%	43.6%	46.1%	46.7%	44.3%	47.2%	45.2%	39.6%	40.1%	45.7%	51.2%	50.5%	
NHS Richmond CCG	54.4%	50.3%	52.2%	57.5%	51.5%	52.1%	47.2%	47.2%	46.3%	52.2%	57.9%	52.1%	
NHS Southwark CCG	41.3%	38.8%	39.0%	41.1%	36.4%	32.7%	36.6%	33.3%	30.0%	37.1%	39.0%	35.0%	
NHS Sutton CCG	57.0%	47.9%	52.1%	51.9%	53.5%	53.1%	50.0%	47.7%	45.1%	48.4%	54.0%	54.5%	
NHS Wandsworth CCG	46.9%	43.4%	50.3%	45.3%	41.2%	41.1%	36.4%	37.0%	35.9%	44.2%	47.1%	47.1%	
SL total	52.4%	46.7%	47.7%	52.2%	44.7%	45.3%	44.9%	40.9%	40.3%	44.7%	51.7%	47.5%	
London Total	47.2%	46.7%	46.5%	48.0%	43.7%	42.4%	40.8%	40.1%	38.5%	42.9%	47.8%	47.9%	

Please note : Data is subject to change, as each month the data is refreshed, therefore the figures may increase.

SL performance uptake had increased since December 2013 but had seen a drop in February 14 by 4.2%. Lambeth and Southwark CCGs had the lowest % uptake in South London with 38.7% and 35%, in February 14. (Lambeth) 21.3% and (Southwark) 25% below the minimum standard of 60%.

Bowel Screening uptake data By Screening Centre 60-69 years - April 2013 to February 2014

	Apr-13	May-13	Jun-13	Jul-13	Aug-13	Sep-13	Oct-13	Nov-13	Dec-13	Jan-14	Feb-14
Screening Centre name											
North East London Bowel Cancer Screening Centre	47.4%	44.6%	45.8%	40.9%	41.0%	38.3%	37.1%	39.9%	41.6%	43.5%	46.4%
University College London Bowel Cancer Screening Centre	42.8%	45.2%	48.9%	49.2%	44.0%	41.0%	41.4%	36.3%	40.8%	50.9%	44.6%
St Marks Bowel Cancer Screening Centre	55.3%	47.8%	46.0%	43.3%	40.0%	39.3%	45.6%	41.5%	47.4%	52.5%	50.6%
West London Bowel Cancer Screening Centre	42.3%	45.6%	40.4%	37.8%	37.0%	34.2%	34.4%	31.4%	45.1%	49.3%	50.0%
South East London Bowel Cancer Screening Centre	46.2%	45.0%	53.5%	43.4%	42.7%	45.6%	40.4%	38.5%	41.0%	43.1%	51.7%
St Georges Bowel Cancer Screening Centre	47.3%	50.6%	50.9%	46.1%	48.2%	44.2%	41.4%	42.3%	38.1%	46.2%	44.6%
Grand Total	46.7%	46.5%	48.0%	43.7%	42.4%	40.8%	40.1%	38.5%	42.3%	47.8%	47.9%



Please note : Data is subject to change, as each month the data is refreshed on Open Exeter, Interactive Bowel dashboard, therefore the figures may increase.